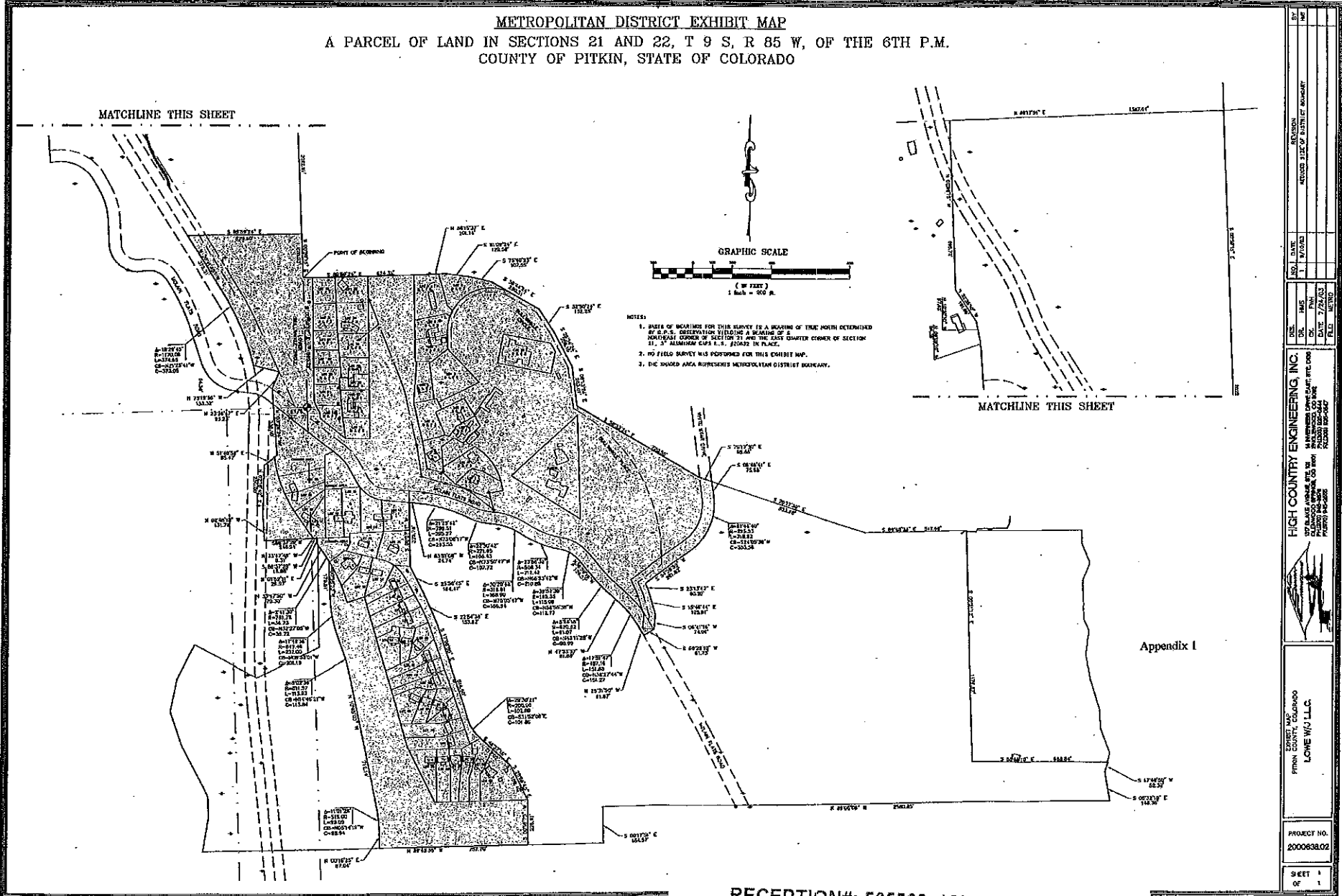


W/I Metropolitan District

METROPOLITAN DISTRICT EXHIBIT MAP

A PARCEL OF LAND IN SECTIONS 21 AND 22, T 9 S, R 85 W, OF THE 6TH P.M.
COUNTY OF PITKIN, STATE OF COLORADO



- NOTES:
1. PARTS OF BEARINGS FOR THIS SURVEY IS A BEARING OF TRUE NORTH DETERMINED BY P.P.S. OBSERVATION YIELDING A BEARING OF NORTHWARD CORNER OF SECTION 21 AND THE EAST QUARTER CORNER OF SECTION 21, 57 ALUMINUM CAPS I.S. #20422 IN PLACE.
 2. NO FIELD SURVEY WAS PERFORMED FOR THIS EXHIBIT MAP.
 3. THE SHADDED AREA REPRESENTS METROPOLITAN DISTRICT BOUNDARY.

NO.	DATE	REVISION
1	1/1/03	REVISED SIZE OF DISTRICT BOUNDARY
2	1/1/03	REVISED SIZE OF DISTRICT BOUNDARY
3	1/1/03	REVISED SIZE OF DISTRICT BOUNDARY
4	1/1/03	REVISED SIZE OF DISTRICT BOUNDARY
5	1/1/03	REVISED SIZE OF DISTRICT BOUNDARY
6	1/1/03	REVISED SIZE OF DISTRICT BOUNDARY
7	1/1/03	REVISED SIZE OF DISTRICT BOUNDARY
8	1/1/03	REVISED SIZE OF DISTRICT BOUNDARY
9	1/1/03	REVISED SIZE OF DISTRICT BOUNDARY
10	1/1/03	REVISED SIZE OF DISTRICT BOUNDARY

HIGH COUNTRY ENGINEERING, INC.
 100 S. W. 10th Ave., Suite 100
 Denver, CO 80202
 PHONE: 303-733-0000
 FAX: 303-733-0001
 WWW: www.hceng.com

APPENDIX I
 FROM: LONE W/I LLC
 PROJECT NO. 200063802
 SHEET 1 OF 1

RECEPTION#: 565522, 12/22/2009 at
12:42:21 PM,
1 OF 1, R \$6.00 Doc Code MAP
Janice K. Vos Caudill, Pitkin County, CO